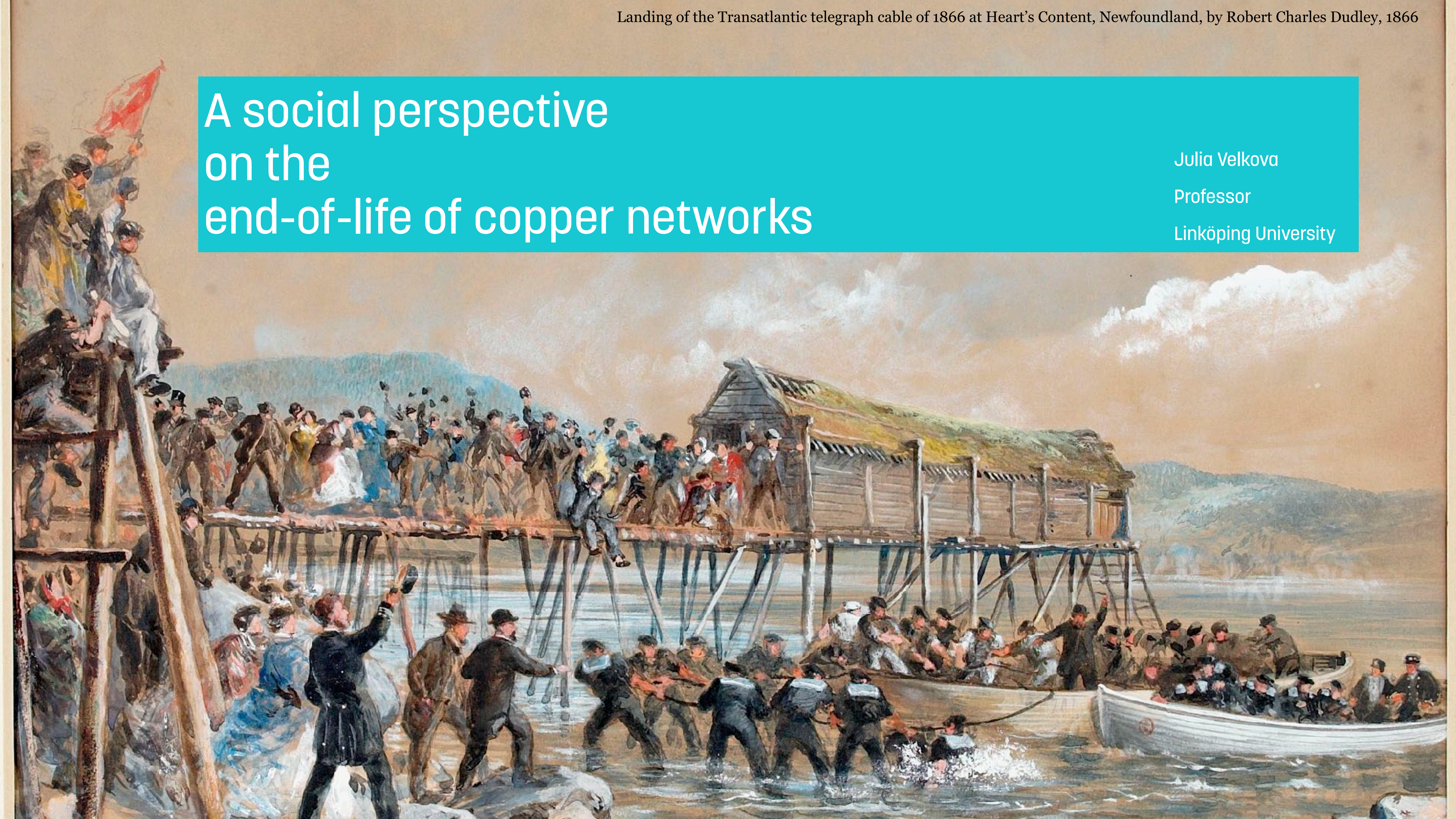


A social perspective on the end-of-life of copper networks

Julia Velkova

Professor

Linköping University



Enduring networks?



A large flock of birds, possibly geese or swans, is captured in flight over a flat, open landscape. The birds are densely packed in the upper half of the frame, creating a sense of movement and scale. The landscape below is a flat, light-colored expanse, likely a field or tundra, with a line of bare trees visible in the distance. The sky is a pale, hazy blue. The overall scene conveys a sense of natural wonder and the complexity of collective behavior.

1. How do we imagine this process?

A migration



A switch-off



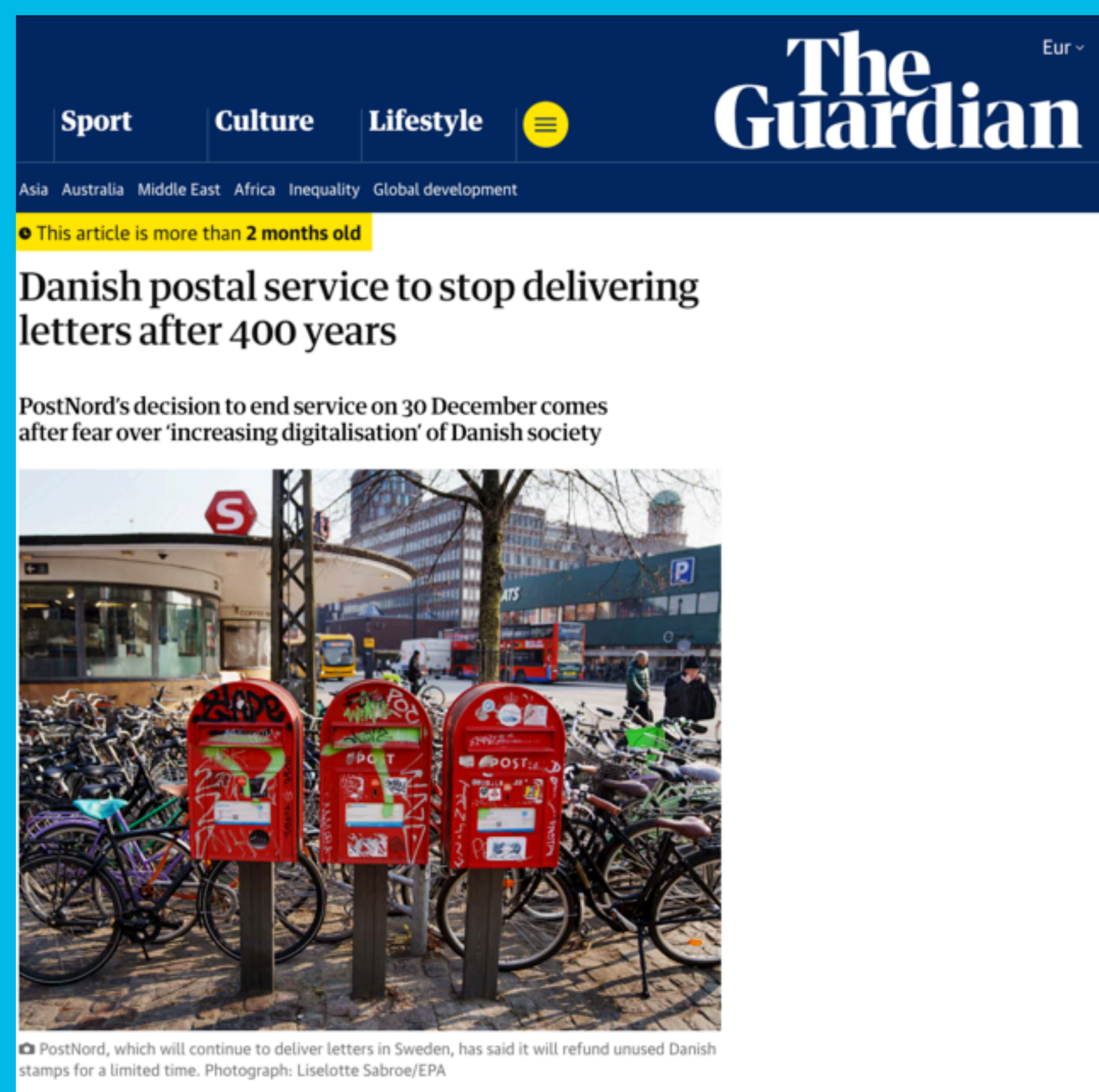


Collective?

Effortless?

Disruption & loss

....as part of a landscape of infrastructure and service losses - new and old



+ newspaper delivery discontinues in Sweden

+BankID discontinued support on phones older than Android 9 and iOS 16

+ banks and healthcare services shut down in countryside



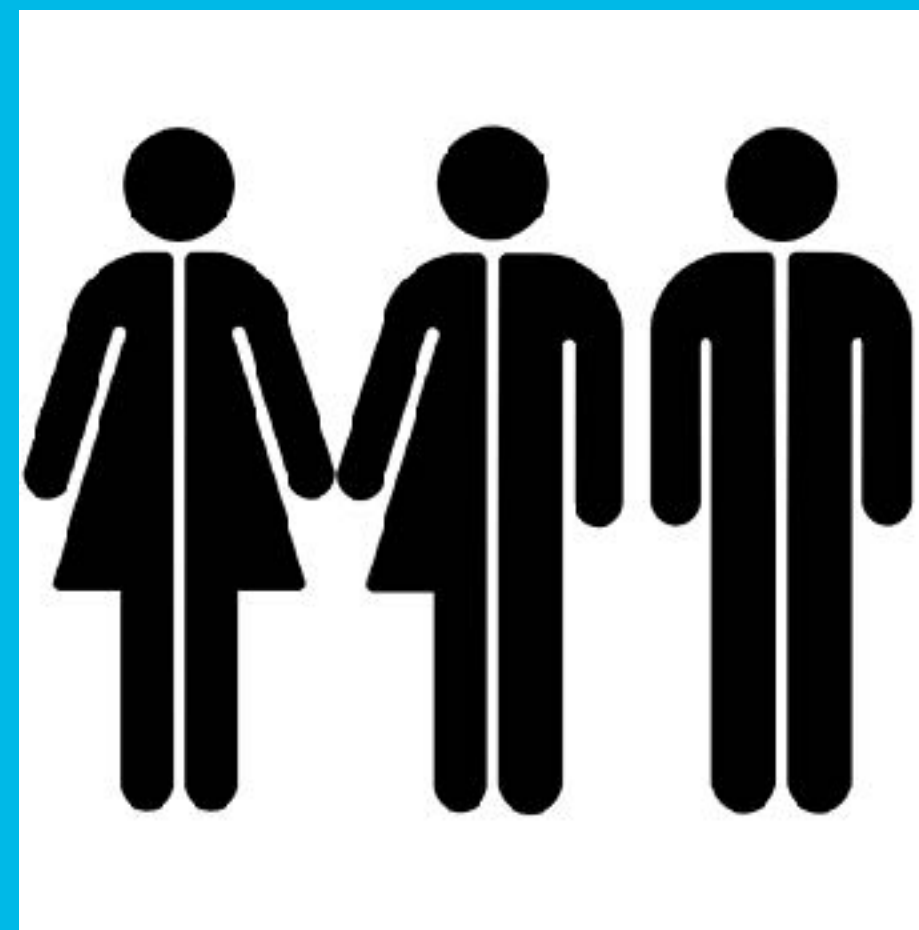
2. Losses shaped by unique conditions and histories of copper & infrastructure development

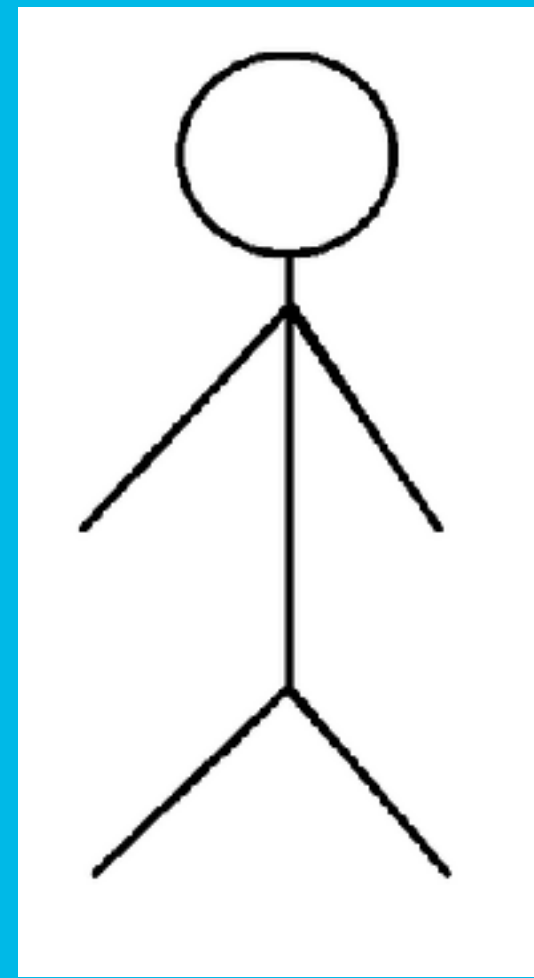


"A telephone in each home and on the same conditions,
no matter where the subscriber lives" (1940).

"with the whole population of the country as a
permanent client, the company has to treat everyone
equally and work for the public" (1940)

3. Categories of end-users, or what keeps people attached to the network?





Stormen Gudrun fällde omkring 75 miljoner kubikmeter skog i södra Sverige. Foto: SVT

People exist at the intersection of many categories which are all dynamic

Stress cases, scenarios and life situations help project how copper dismantling affects people, services, things and organisations.



public/societal masts - project Fulltäckning

<https://www.fulltackning.se/om-oss/>

4. Afterlives: after copper comes
what?





4. Afterlives: after copper comes what?



Four questions

1. Who needs copper to go and who needs it to stay? Why?
2. What happens when fibre/mobile does not arrive? Or when they half-arrive? Who provides basic connectivity services and takes the role of public utility? Starlink? Neighbours? Universities?
3. What happens with people and things when they are disconnected from copper?
4. How will we live with the environmental contamination of tons of disused equipment in informal circulation?